



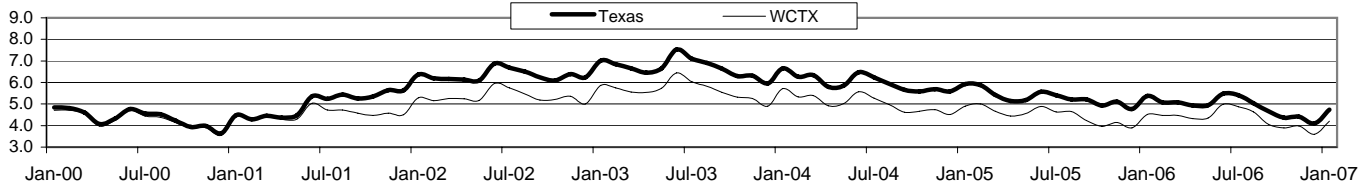
# West Central Texas Workforce Development Area

# January 2007

## Civilian Labor Force Estimates (Not Seasonally Adjusted)

	West Central Texas WDA				Texas			
	CLF	Employed	Unemployed	Rate	CLF	Employed	Unemployed	Rate
Jan-07	158,306	151,663	6,643	4.2	11,526,683	10,980,144	546,539	4.7
Dec-06	158,958	153,248	5,710	3.6	11,592,664	11,118,294	474,370	4.1
Jan-06	158,086	150,951	7,135	4.5	11,329,889	10,720,877	609,012	5.4

## Historical Unemployment Rates



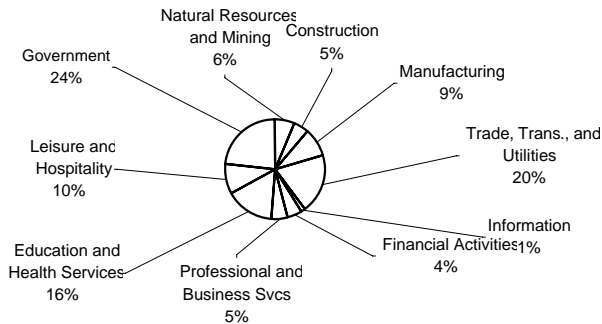
## Total Claims

	Jan-07	Dec-06	Jan-06	OTY
Initial	549	662	621	-72
Continued	3,021	3,110	4,506	-1,485
<b>Continued Claims for the Week of the 12th</b>				
Continued	702	711	841	-139

## Average Weekly Wage

	WCTX	Change	Texas
3rd Qtr 2006	\$562.59	26.40	\$785.35
2005 Average	\$536.20	20.63	\$822.95
2004 Average	\$515.57		\$799.03

## West Central WDA Industry Composition 3rd Quarter 2006



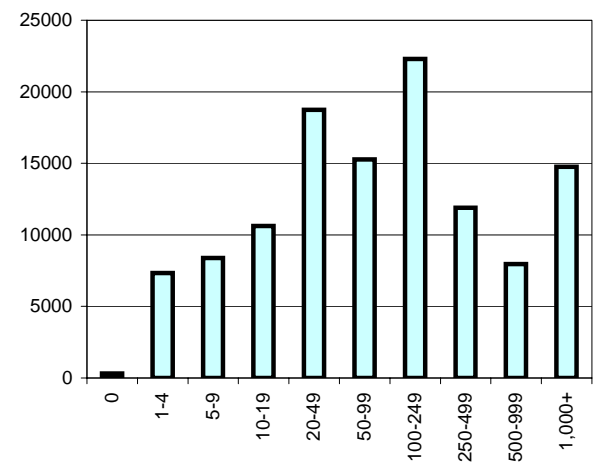
## Top 10 Private Employers in the WDA 3rd Quarter 2006

3M COMPANY MANUFACTURING COMPANY  
 ABILENE CHRISTIAN UNIVERSITY  
 ABILENE REGIONAL MEDICAL CENTER  
 AMS BUSINESS SOLUTIONS & STERLING PERSONNEL  
 BROWNWOOD MEDICAL CENTER LLC  
 GIRLING HEALTH CARE INC  
 HENDRICK MEDICAL CENTER  
 KOHLER COMPANY  
 UNITED SUPERMARKETS LTD  
 WAL-MART ASSOCIATES INC

## NAICS COVERED EMPLOYMENT QUARTERLY DATA 3rd Quarter 2006

SUPER SECTOR	Total	Change Quarter	Year
Natural Resources & Mining	7,348	309	1,303
Construction	5,760	55	958
Manufacturing	10,273	-36	478
Trade, Trans., and Utilities	21,907	-61	361
Information	1,662	-25	42
Financial Activities	5,119	-42	89
Professional and Business Svcs.	6,217	-266	181
Education & Health Services	18,009	15	-512
Leisure & Hospitality	11,045	-181	1,086
Other Services	3,402	-137	-120
Federal Government	2,028	36	305
State Government	5,939	-107	-48
Local Government	18,563	-891	-781
Nonclassified & Confidential	301	135	228
<b>TOTAL</b>	<b>117,573</b>	<b>-1,196</b>	<b>3,570</b>

## Size Class Employment Composition 3rd Quarter 2006



## **Wealth Established Through the Delivery of Healthcare**

The Long Term/ Skilled Care industry joins hospitals, surgical centers, dental services, optometry, chiropractic services and many other professions, to provide high quality health care to thousands of consumers in West Central Texas. Healthcare delivery requires several ancillary service providers to ensure the consistent distribution of the highest level of quality care. These services include relationships with local doctors and hospitals and their office staff, as well as diagnostic services, many of which are far too costly to be offered as in-house technology to the residents of the facility. These ancillary services, offered by outside contracted businesses, establish a profit source for these businesses along with employment opportunities for skilled and unskilled labor. These service providers are drawn to the region as a result of the concentration of medical services provided in Abilene.

Healthcare profit is multifaceted. Payer sources are varied and sometimes complicated. Common sources of payment come from Medicare, HMO/Managed Care contracts, Medicaid, Workers Compensation Plans, as well as private funds. The collection of payment for services provided is often complicated and time consuming as well. In some cases several months will pass before these monies can be collected. Cash flow in this industry is critical as services come at a high cost to the facility as well as the individual.

The Skilled Care facility that I run is a viable economic entity that generates a flow of income that supports far more than the services provided to the residents in my building. It supports local businesses such as pharmaceutical services, food suppliers, labor markets, local utilities, trades services, durable medical, city services such as trash collection, ambulance services and so on. The facility supports local governments through taxation and licensure fees.

*Article written by Dennis Carlson, Administrator of Northern Oaks, a Skilled Care & Out-Patient Therapy facility in Abilene, Texas. Northern Oaks employs nearly 100 people and delivers quality skilled medical services.*

## **The Workforce Board's Healthcare Cluster Initiative**

The West Central Texas Healthcare Industry Cluster was established by the Workforce Development Board to address the workforce needs of our region. The cluster is looking into ways to increase the number of healthcare providers, (nurses, laboratory technicians, x-ray technicians and others) trained in meeting workforce needs. One initiative is a \$15,000 revolving loan/grant fund, which is being established by the West Central Texas Workforce Development Board, in partnership with the Texas Organization of Rural Community Hospitals (TORCH), to provide assistance to current employees in the healthcare industry in continuing their education. Other topics being discussed are a virtual job fair and a pre-screening tool to assist in employee retention. Interested employers in the healthcare industry are invited to attend the next Healthcare Cluster meeting on Monday, March 26, 10:00-11:30 a.m., at the Workforce Center. Contact Robert Puls, Business Development Consultant, for more information at (325) 795-4302 or by e-mail at [robert.puls@workforcesystem.org](mailto:robert.puls@workforcesystem.org).

## **Third Welding Class Completes Training**

During the summer of 2006, a consortium was formed, consisting of the City of Abilene, the Workforce Center, Cisco Junior College, and the West Central Texas Workforce Development Board, to address area labor shortages in welding. A 120-hour express welding course was developed, consisting of four weeks of welding at CJC and one week of basic employment skills training at the Workforce Center. The first two classes graduated in September and in November of last year. The third class of fourteen students graduated in February and participated in a job fair with local employers.

Funding for additional training in welding was recently awarded to the Development Corporation of Abilene by the Workforce Board in the form of a Workforce Investment Fund (WIF) grant\*. The WIF grant has made it possible to conduct two additional classes, which will be conducted this spring. The application deadline for the first of these classes is March 26th, and applications for the second class may be submitted from April 9-27. For more information, visit the Workforce Center website at [www.workforcesystem.org](http://www.workforcesystem.org), or contact Robert Puls, Business Development Consultant, at (325) 795-4302 or by e-mail at [robert.puls@workforcesystem.org](mailto:robert.puls@workforcesystem.org).

\*Note: The deadline for interested employers to apply for a Workforce Investment Fund training grant for the next grant cycle is March 31, 2007. The application packet may be accessed on-line at [www.workforcesystem.org](http://www.workforcesystem.org).

## **First Manufacturing Certification Training Launched**

Through a partnership between the Workforce Board, the Development Corporation of Abilene, TSTC Abilene, the Workforce Center, and local nine local manufacturers, the first certification training in basic manufacturing has been launched, and 15 trainees are currently enrolled in the six-week course, which will culminate in their certification by the Manufacturing Skill Standards Council (MSSC) as Manufacturing Production Technicians. Their course completion and certification will guarantee them an interview with the participating manufacturers. The application period for a second MSSC training class, to be conducted this summer, will be April 29-May 11. For additional information, contact Nancy Smith, Community Development Consultant, at (325) 795-4306 or by e-mail at [nancy.smith@workforcesystem.org](mailto:nancy.smith@workforcesystem.org).



WEST CENTRAL TEXAS WORKFORCE  
DEVELOPMENT BOARD  
400 Oak St. \* Abilene, Texas 79602

The Workforce Center is an equal opportunity employer. Auxiliary aids and services are available upon request in individuals with disabilities. For TDD call 1-800-735-2898 or voice accessible communication at 1-800-735-2988