



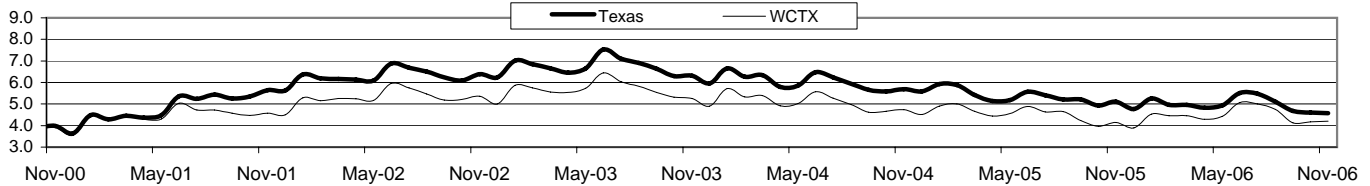
# West Central Texas Workforce Development Area

# November 2006

## Civilian Labor Force Estimates (Not Seasonally Adjusted)

	West Central Texas WDA				Texas			
	CLF	Employed	Unemployed	Rate	CLF	Employed	Unemployed	Rate
Nov-06	158,869	152,190	6,679	4.2	11,634,858	11,101,871	532,987	4.6
Oct-06	158,737	152,104	6,633	4.2	11,622,409	11,088,131	534,278	4.6
Nov-05	157,027	150,511	6,516	4.1	11,333,729	10,755,141	578,588	5.1

## Historical Unemployment Rates



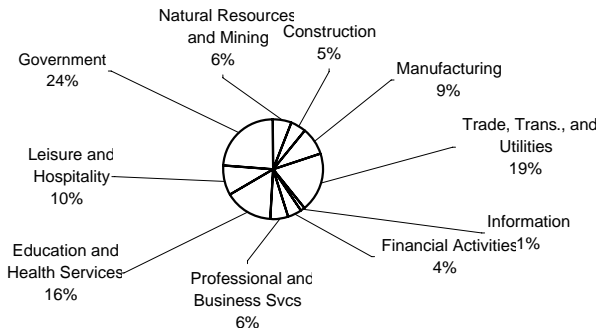
## Total Claims

	Nov-06	Oct-06	Nov-05	OTY
Initial	1,088	662	410	678
Continued	2,490	2,215	2,680	-190
<b>Continued Claims for the Week of the 12th</b>				
Continued	623	519	658	-35

## Average Weekly Wage

	WCTX	Change	Texas
2nd Qtr 2006	\$544.04	7.84	\$781.37
2005 Average	\$536.20	20.63	\$822.95
2004 Average	\$515.57		\$799.03

## West Central WDA Industry Composition 2nd Quarter 2006



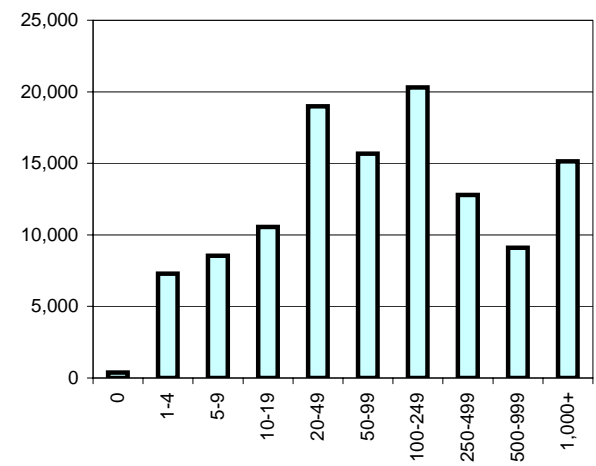
## Top 10 Private Employers in the WDA 2nd Quarter 2006

3M COMPANY MANUFACTURING COMPANY  
 ABILENE CHRISTIAN UNIVERSITY  
 ABILENE REGIONAL MEDICAL CENTER  
 AMS BUSINESS SOLUTIONS & STERLING PERSONNEL  
 BROWNWOOD MEDICAL CENTER LLC  
 GIRLING HEALTH CARE INC  
 HENDRICK MEDICAL CENTER  
 KOHLER COMPANY  
 UNITED SUPERMARKETS LTD  
 WAL-MART ASSOCIATES INC

## NAICS COVERED EMPLOYMENT QUARTERLY DATA 2nd Quarter 2006

SUPER SECTOR	Total	Change Quarter	Year
Natural Resources & Mining	7,039	392	1,064
Construction	5,705	-64	364
Manufacturing	10,309	163	437
Trade, Trans., and Utilities	21,968	209	388
Information	1,687	10	-14
Financial Activities	5,161	103	120
Professional and Business Svcs.	6,483	158	502
Education & Health Services	17,994	-444	-231
Leisure & Hospitality	11,226	460	693
Other Services	3,539	100	-46
Federal Government	1,992	56	310
State Government	6,046	80	68
Local Government	19,454	141	143
Nonclassified & Confidential	166	40	49
<b>TOTAL</b>	<b>118,769</b>	<b>1,404</b>	<b>3,847</b>

## Size Class Employment Composition 2nd Quarter 2006



## Workforce Board Initiates Training Program in Manufacturing

On November 15, 2005, the Manufacturing Skill Standards Council (MSSC) launched a new certification system designed to prepare a generation of American workers to meet the challenges of globalization. The system will assess worker skills and knowledge based on industry-validated standards for all manufacturing sectors, leading workers to the nationally recognized certification of "Manufacturing Production Technician." Assessment is provided in four modules: manufacturing processes and production, safety, quality practices and continuous improvement, and maintenance awareness. Workers may be trained and certified in each of the individual modules, as well as the 4-module assessment, which results in the "Manufacturing Production Technician" designation.

The West Central Texas Workforce Development Board recently received \$83,400 from the Development Corporation of Abilene to implement a pilot project, utilizing the MSSC certification process and curriculum, to train and assess entry-level workers in basic foundational skills required to enter a career in manufacturing. A survey process was conducted to determine worker demand in manufacturing, interest levels of local employers, and specific training requirements. There was overwhelming support from the twelve Abilene manufacturers who were surveyed. Recruitment and pre-screening of applicants, as well as employability training, will be handled by the Workforce Center. TSTC Abilene will provide classroom facilities and an MSSC-certified instructor for the five-week skills training. At the conclusion of the training period and certification, local manufacturers will participate in a job fair to conduct interviews with program graduates.

Applications for interested individuals will be available on-line at [www.workforcesystem.org](http://www.workforcesystem.org) beginning the first week in February 2007. For more information, contact Nancy Smith, Community Relations Coordinator, West Central Texas Workforce Development Board, at (325) 795-4306 or by e-mail at [nancy.smith@workforcesystem.org](mailto:nancy.smith@workforcesystem.org).

---

## 2007 Brown Bag Series Begins

For the past 3 years, the West Central Texas Workforce Development Board has sponsored a series of monthly brown bag seminars. The topics are chosen to assist our business customers (including HR professions and small business owners) and the cost is only \$10. This year the newsletter will preview each topic the month before the presentation. This allows you to prepare and decide who would most benefit from attending. The topic for the February 15, 2007 Brown Bag is "Violence in the Workplace". How does anger turn to violence? Below is an excerpt from the article "Anger--What It Is, What It Can Do, and How to Manage It," written by Dawn Rosenberg McKay, career planning professional and writer.

*"Anger is an emotion. It is a reaction to a real or perceived threat. Our natural response to this emotion is rage. Physiologically, our heart rate speeds up. We may feel our cheeks become flushed and jaws clench. Some of us respond to the feeling of anger by slamming doors, confronting the person who we perceive to have caused our anger, or in this age of speedy computer technology, firing off an angry email. Those who easily fly off the handle are usually aware of this tendency and should take steps to react differently to adverse situations.*

*At the least, anger can cause hurt feelings. It can also make us less productive at work by causing stress which in turn leads to illness and absenteeism. In severe situations, anger can spark physical violence. It is important to diffuse your anger before it goes too far. This is especially true in the workplace, where losing your temper can result in termination. When anger turns violent, you may find yourself facing legal action.*

*When faced with a situation that angers us, it is important to be proactive in dealing with it. Rather than let the anger get the best of us, we must get the best of it. We must take steps to get our anger under control. If that isn't possible, we must be able to determine that and walk away if necessary.*

*Anger begets anger, which leads to conflict. When faced with another's wrath, it is a good idea to know how to deal with it. We must keep it from going further. In the workplace we are sometimes faced with hostile customers. It is vital to remember that, although a customer's tirade may be directed at you, the object of his or her emotion is probably the organization which you represent. If you are a manager, you may also be forced to deal with the anger of your subordinates. Again the object of anger may be your organization. You would be wise to determine its cause and defuse it before it turns violent."*

If you would like more information about managing anger and violence in the workplace, you are invited to attend a brown bag lunch on February 15, 2007. Call Robert Puls, Business Services, at (325) 795-4200 for more information.

## Employers Invited to Participate in Job Fair

The 5th annual "*Hot Dog--I Got a Job!*" *Area Youth Job Fair* will be held on Friday, March 23, 2007, from 2:00-6:00 p.m. at the Abilene Civic Center. Employers who have an on-going need for part-time workers, or who are interested in hiring employees during the summer months, should attend this event. Businesses who participate will have access to a large number of young workers, ages 16-21. Over 900 young job seekers attended last year's event. There is no booth registration fee for employers; however, space is limited. Employers should contact a Business Outreach Specialist at the Workforce Center in Abilene at (325) 795-4200 to reserve booth space at the job fair. For more information, contact Robert Puls at (325) 795-4302 or by e-mail at [robert.puls@workforcesystem.org](mailto:robert.puls@workforcesystem.org).

## Friend of Workforce Award Honorees Announced

In an effort to show appreciation to the many individuals and organizations who have supported the efforts of the West Central Texas Workforce Center System, the Workforce Board created the *Friend of Workforce Award*. The seven recipients for this awards cycle will be honored guests at a luncheon on Friday, February 2, 2007, to be held in the Taylor Room of the Workforce Center, located at 400 Oak Street in Abilene.

Individuals to be recognized are: Stan Lambert with Citibank; Richard Burdine with the City of Abilene; Ross Jones, Attorney; the TSTC Sweetwater Telecommunications Department; Abilene Mayor Norm Archibald; Gene Deason with the Brownwood Bulletin; and Bill Culp with the Non-Profit Management Center. For more information on the Friend of the Workforce Award, contact Nancy Smith at (325) 795-4306 or by e-mail at [nancy.smith@workforcesystem.org](mailto:nancy.smith@workforcesystem.org).



WEST CENTRAL TEXAS WORKFORCE  
DEVELOPMENT BOARD  
400 Oak St. \* Abilene, Texas 79602

The Workforce Center is an equal opportunity employer. Auxiliary aids and services are available upon request in individuals with disabilities. For TDD call 1-800-735-2898 or voice accessible communication at 1-800-735-2988